

THE JOURNEY TO PEACE AS AN INDIVIDUAL & A COMMUNITY

DR. TERRY ALBAN

SUPERINTENDENT, FREDERICK COUNTY PUBLIC SCHOOLS

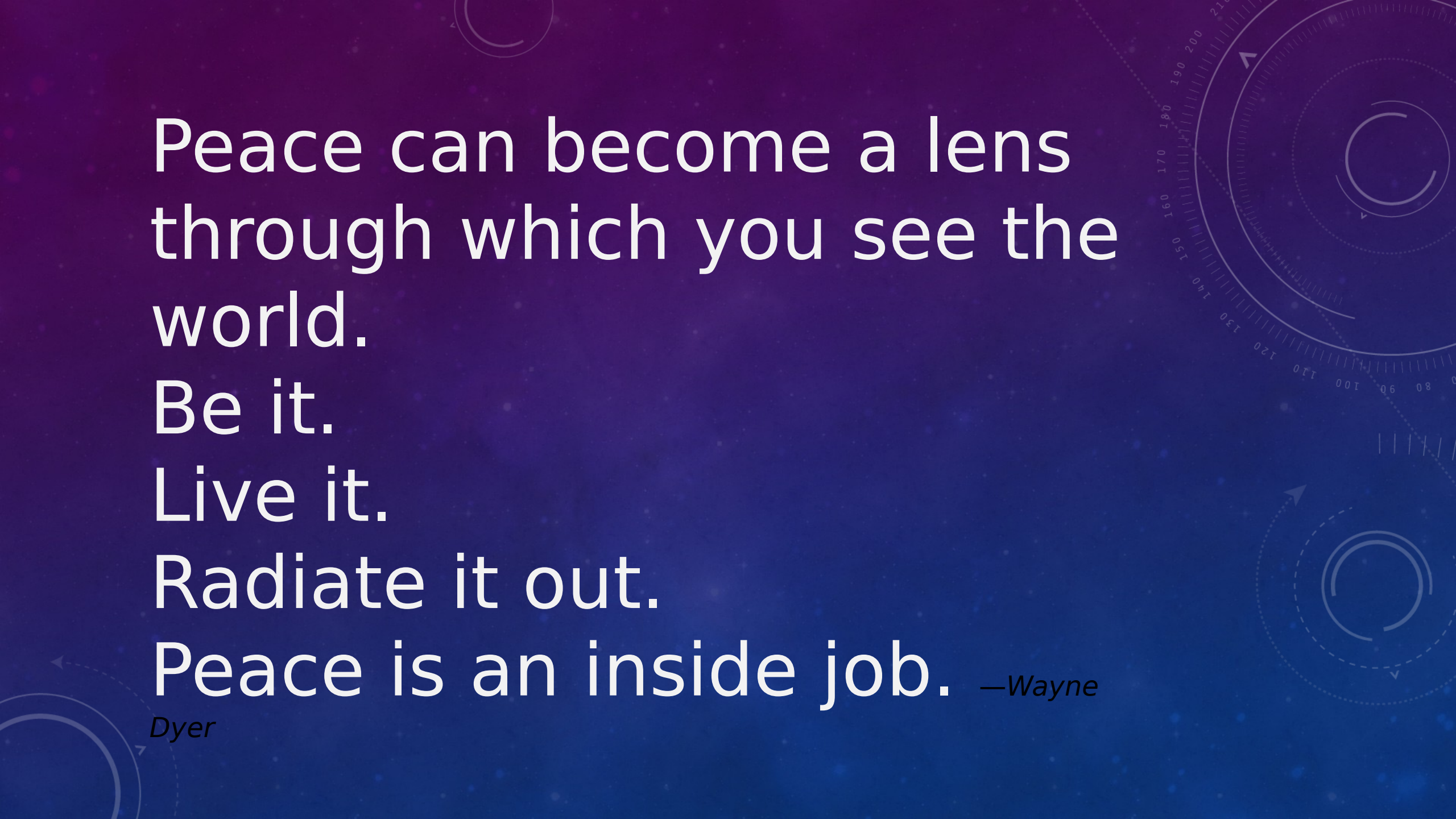
APRIL 18, 2020

WHY A JOURNEY?

The background is a dark blue gradient with a subtle pattern of white stars and technical diagrams. On the right side, there are several circular diagrams resembling gauges or progress indicators. One large gauge has a scale from 0 to 210 with tick marks and a white arrow pointing upwards. Below it, another gauge has a scale from 0 to 100 with tick marks and a white arrow pointing right. In the bottom left corner, there are dashed circular lines with arrows indicating a clockwise direction.

The background is a dark blue gradient with a subtle pattern of white stars and technical diagrams. On the right side, there are several circular diagrams resembling gauges or dials with numerical scales (e.g., 100, 110, 120, 130, 140, 150, 160, 170, 180, 190, 200, 210) and arrows. There are also dashed lines and other geometric shapes scattered across the scene.

AS AN INDIVIDUAL...



Peace can become a lens
through which you see the
world.

Be it.

Live it.

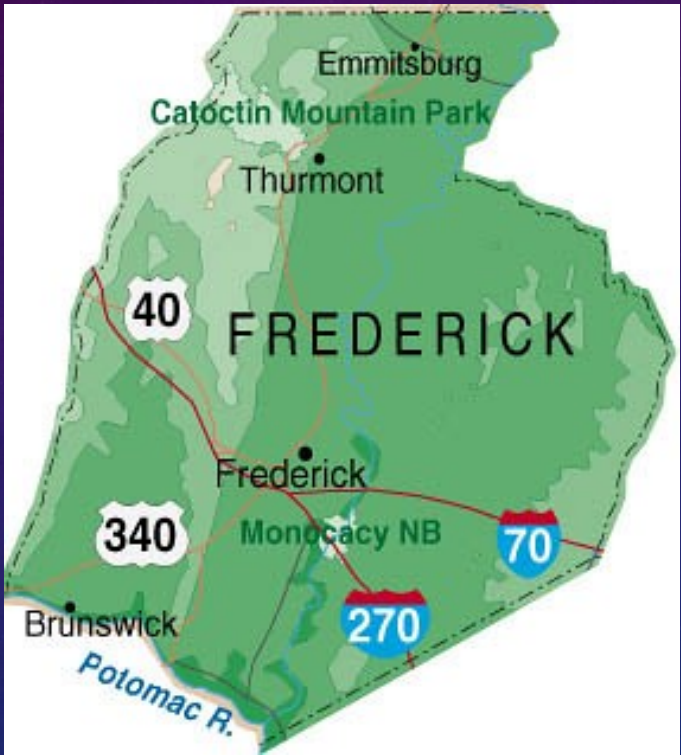
Radiate it out.

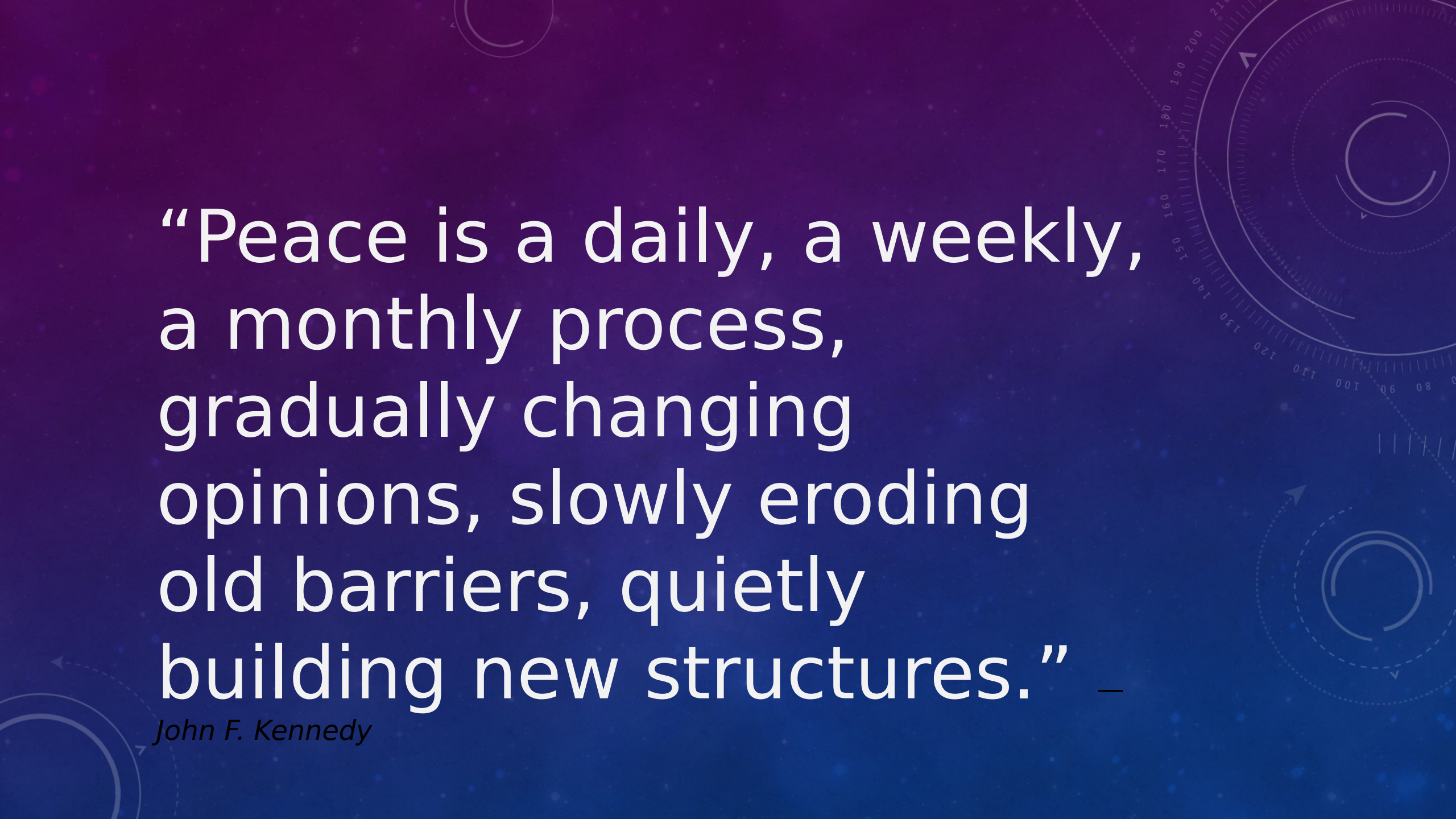
Peace is an inside job. —*Wayne*

Dyer

The background features a gradient from dark purple at the top to dark blue at the bottom, with a field of small white stars. Faint, semi-transparent circular patterns, including a large one with a scale from 80 to 210 and several smaller ones with arrows, are scattered across the scene.

IN MY COMMUNITY...



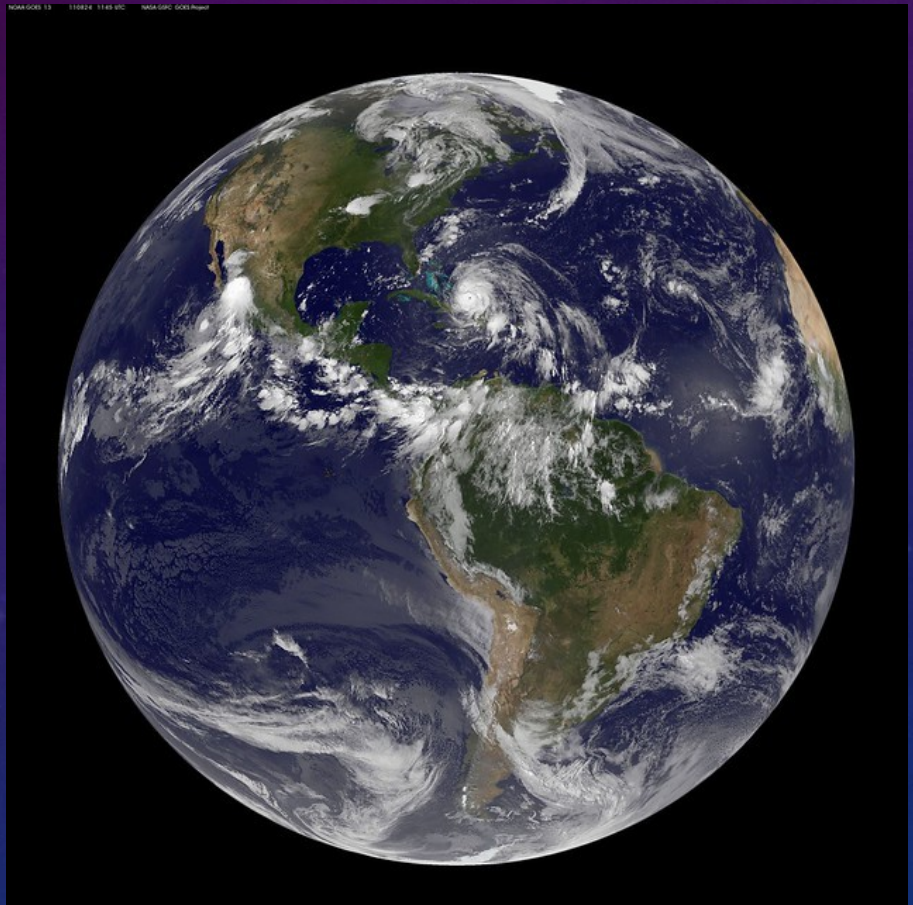
The background is a dark blue gradient with a subtle pattern of white stars. On the right side, there are several technical diagrams, including a large circular scale with numbers from 80 to 210 and arrows, and other smaller circular patterns with arrows. On the left side, there are faint circular patterns with arrows.

“Peace is a daily, a weekly,
a monthly process,
gradually changing
opinions, slowly eroding
old barriers, quietly
building new structures.” –

John F. Kennedy

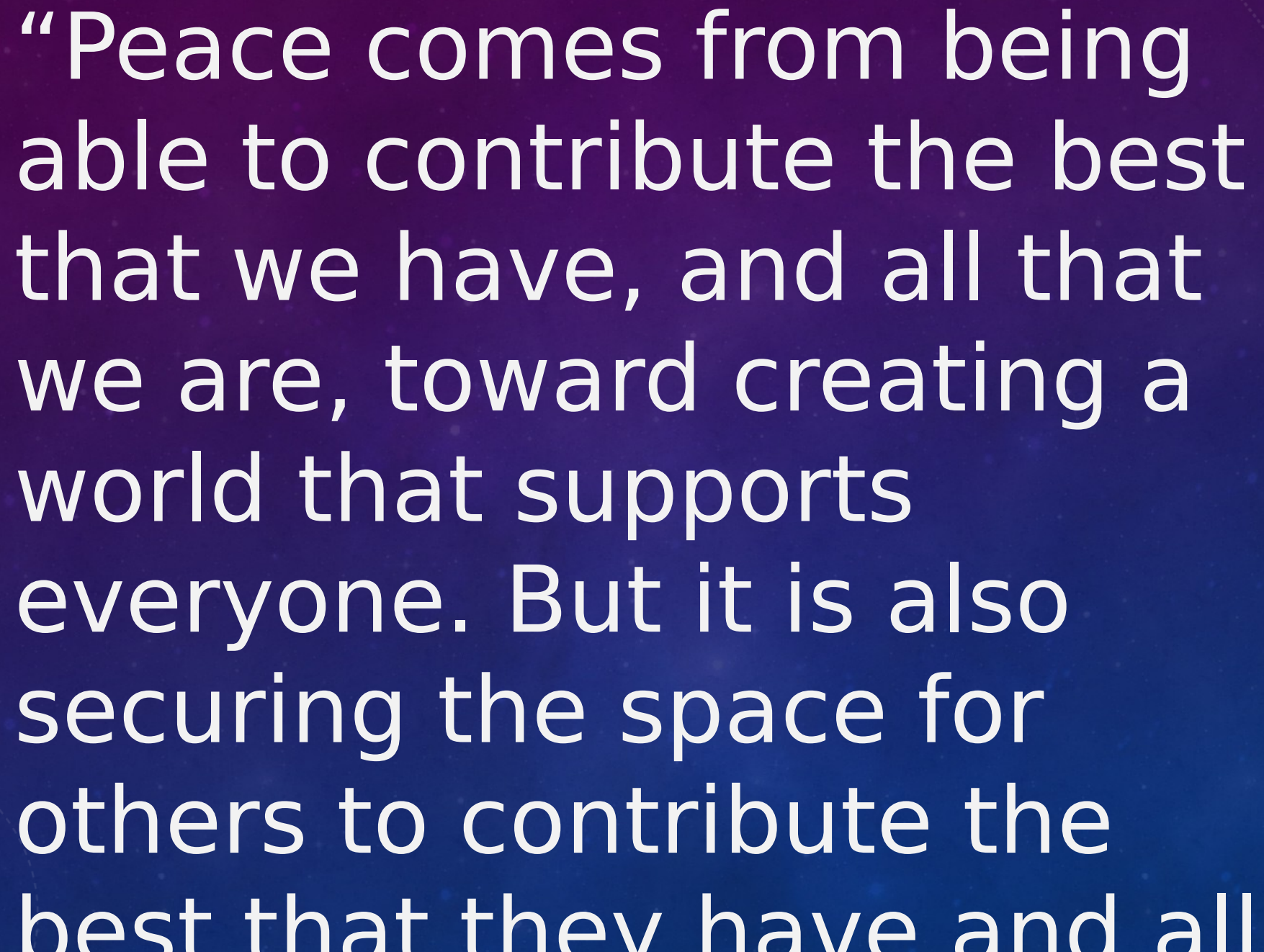
The background features a gradient from dark purple to blue, overlaid with a field of small white stars. Several technical diagrams are visible: a circular gauge with a scale from 80 to 210 and an arrow pointing to approximately 190; a circular diagram with concentric dashed lines and an arrow; and a circular diagram with concentric solid lines and an arrow. The text "IN OUR COMMUNITY..." is centered in a white, bold, sans-serif font.

IN OUR COMMUNITY...



NOAA-GOES 13 110824 1148 UTC NOAA-GOES 0001.P001





“Peace comes from being able to contribute the best that we have, and all that we are, toward creating a world that supports everyone. But it is also securing the space for others to contribute the best that they have and all

CONGRATULATIONS!

